

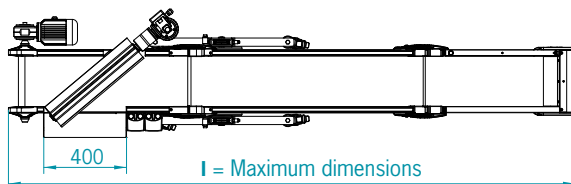
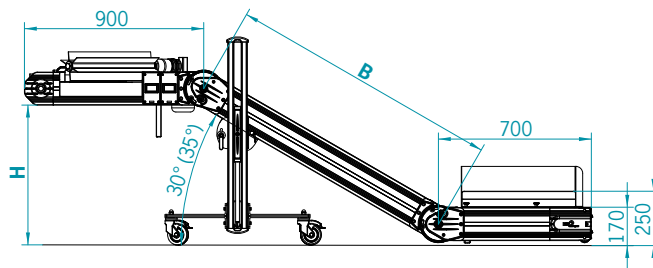
N-CPST conveyor with paddle type separator

EASY LINE

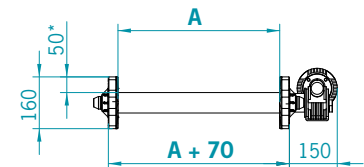
On demand, an "Easy Line" version is available, with simplified supporting legs which allow a reduction of 15% on the final price of the conveyor.



STANDARD DIMENSIONAL FEATURES



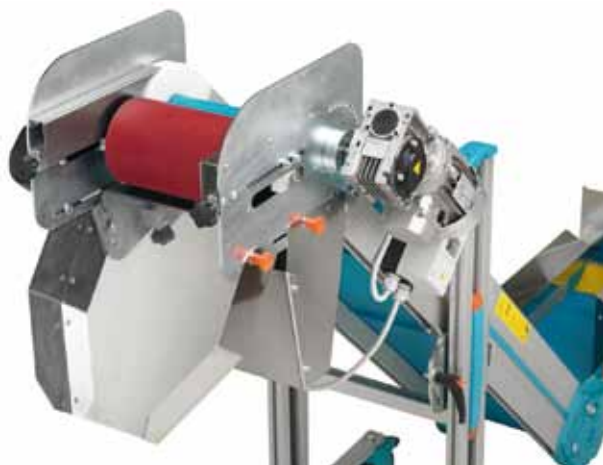
- Sturdy frame made of primary extrusion aluminium section, Alloy 6060, protected by anodisation treatment thickness 15 micron.
- Standard cut-proof, oil-proof belt, with high grip green PVC covering (ref. Pantone 320); vulcanised belt joint.
- Minimum and maximum temperature resistance of belt -10°C to +60°C.
- Standard transmission group of the conveyor consisting of 0.12 kW three-phase, asynchronous motor coupled with worm reduction unit with permanent lubrication.
- Standard transmission group of the separator consisting of 0.09 kW three-phase, asynchronous motor coupled with worm reduction unit with permanent lubrication and torque limiter.
- Fixed standard conveyor speed 3 m/min.
- Conveyor complete with Siemens Start and Stop double switch/motor cut-out (one for the conveyor and one for the separator), with 5 m cable and 4P CE plug (3 phases + ground).
- Standard motor supply voltage 400 Volts/50 Hz.



*Standard side panels 50 mm h that are not removable

	A	B	H min	H max	I - 30°
N-CPST.0	140 mm	1300 mm	650 mm	750 mm	2800 mm
N-CPST.1	240 mm	1300 mm	650 mm	750 mm	2800 mm
N-CPST.2	340 mm	1800 mm	900 mm	1030 mm	3250 mm
N-CPST.3	440 mm	1800 mm	900 mm	1030 mm	3250 mm

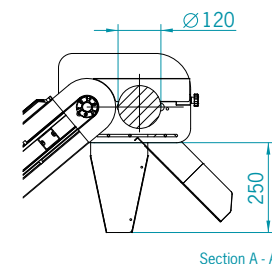
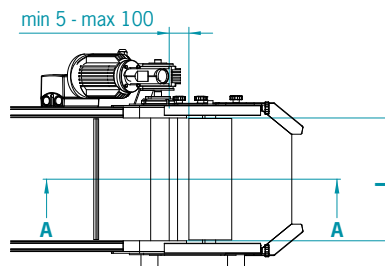
N-SRS and N-FSRV separators installed on conveyor



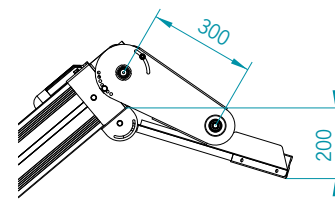
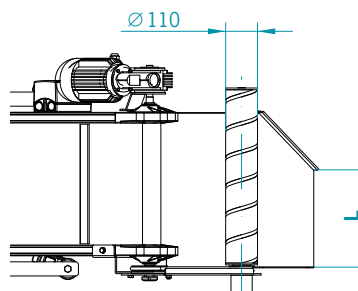
- Three N-SRS separator models are available:
 1. N-SRS 1 model for conveyor with working width 240 mm
 2. N-SRS 2 model for conveyor with working width 340 mm
 3. N-SRS 3 model for conveyor with working width 440 mm



- Three N-FSRV separator models are available:
 1. N-FSRV 1 model for conveyor with working width 240 mm
 2. N-FSRV 2 model for conveyor with working width 340 mm
 3. N-FSRV 3 model for conveyor with working width 440 mm



- This separator is designed for installation on N-CPR and N-CPTR conveyors.
- Transmission of movement from the conveyor to the single separator roller is brought about by means of Pu belt.
- Thanks to the elasticity of the belt, the distance between the separator roller and the conveyor can be adjusted from a minimum of 5 mm to a maximum of 20 mm.
- The conveyor on which the N-SRS separator is installed must have a belt with slats having maximum height 20 mm.



- The N-FSRV sprues separator is installed directly on the conveyor from which the spiral gets its rotation movement.
- Transmission of movement from the conveyor to the spiral roller is brought about by means of Pu belt. For safety reasons, the belt is tightened enough for the rotation. Whenever there is even the slightest obstruction, the spiral roller stops.